

people

paper

products

ATLAS PAPER BAG



ATLAS
PAPER BAG

PRODUCT GUIDE



"It looks good on paper"



ATLAS
PAPER BAG



90 Dynamic Drive,
Toronto ON Canada M1V 2V1
t. 416.293.2125 / f. 416.293.2369
www.atlaspaperbag.com



INDEX

• OUR HISTORY	3
• GENERAL INFORMATION	4
• BAKERIES	5
• BAGS	
• BREAD BAGS	6
• FOIL BAGS	7
• SPECIALTY BAGS	8
• GROCERY BAGS	9
• FOODSERVICE BAGS	10
• SHEETS	
• WAXED PAPERS	11
• PAPER SHEETS & LINERS	12
• FOIL WRAPS AND SHEETS	13
• STEAK PAPERS	14
• BAKING PAN LINERS	15
• ROLLS	
• MEAT & BUTCHER ROLLS	16
• FOODSERVICE ROLLS	17
• MATERIAL DESCRIPTION	18
• ENVIRONMENTAL POLICY	19
• CUSTOM PRINTING	21
• CONTACT INFORMATION	22



Established in 1969, Atlas Paper Bag Co. Ltd. has dedicated itself for **50 years** to manufacturing a wide range of paper bags along with a large selection of sheeted and rolled paper products. Being a privately held corporation, we have aggressively dedicated our resources to employ the most up to date technology and personnel available within the industry. From our state of the art manufacturing facilities in both Canada and abroad, we offer a true value added business partnership to our clients. Our vast market experience and coverage has allowed us to build and foster relationships within the supermarket, food service, processor and distribution networks.

Our history and expertise allows us to meet the demanding standards of the North American market. We comply with **SQF Level 2** standards and requirements as laid out by agencies such as the FDA, USDA, CFIA and the Kosher Council of North America.



GENERAL INFORMATION



Ordering Information - Terms and Conditions

Terms	Payment terms are Net 30 days. All sales are invoiced at price prevailing at time of shipment.
Return	No merchandise may be returned without proper authorization by Atlas Paper Bag Co. Ltd. A 15% re-stocking charge will apply and the return freight must be pre-paid by the customer. Transport claims for damaged or missing products must be made within 30 days, otherwise the claim cannot be honoured.
Pallets	Atlas Paper Bag Co. Ltd ships on CHEP pallets (40" x 48") and on non returnable skids. Please ensure to exchange the CHEP pallets. Maximum pallet height is 48 Inches.

Graphics Information – Customer Charges and Changes

Custom Orders	Custom prints and/or special sizes are quoted upon request. Artwork and plates charges are extra.
Artwork-Plate-Proofs	Once the artwork is approved, an artwork and plate charge cost will be quoted to you by customer service. Inactive artwork and plates will be destroyed after 3 years. Atlas Paper Bag Co. Ltd works with : <ul style="list-style-type: none">• Adobe Illustrator• Photoshop
Materials	For custom orders, quantities are subject to over or under run quantities +/- 10%, thereby, exact manufactured and shipped quantities cannot be guaranteed.

Paper Bakery Bread Bags

As the breads of the world have evolved our diverse product offering has followed - "It's our bread and butter". Our up to date machine capabilities give our client base the most innovative and cost effective solutions to meet their product requirements. This includes perforations, poly coating, polypropylene, PLA as well as acetate windows. We have the ability to print up to 4 colour flexographic, on both the bag and window materials.

We have been the primary supplier of various large and small bakeries in the Toronto area. We can handle the large customer orders as well as the small order quantities for our customer that require smaller runs.



BREAD BAGS

BAGS

Code	Description	UPC	SCC	Pkg	Lbs
STOCK PRINT BREAD BAGS					
1060011	6" x 3.5" x 16" Natural Bread Bags Fresh Bread	772230001156	10772230001153	1000	23.85
1060013	6x3x19 Natural Bread Bag Fresh Bread	772230008322	107722300083229	1000	25.72
1070005	7" x 4" x 16" Natural Bread Bags Fresh Bread	772230011285	10772230011282	1000	27.34
2090002	9" x 6" x 16" Natural Bread Bags Fresh Bread	772230001088	10772230001085	500	18.32
1040147	4.5x2x19 White Vienna Bag S.PTD	772230001149	107722300011496	1000	19.80
PLAIN BREAD BAGS - WHITE					
2040028	4 x 2.5 x 24 A424 White Bag Plain	772230008216	10772230008213	1000	23.63
2040030	4x2x14 A421 White Bag Plain @ 1000	772230009381	10772230009388	1000	13.06
2040031	4x2.5x16 A426 White Bag Plain @ 2000	772230009398	10772230009395	2000	31.99
2040034	4x2.5x27 A427 White Bag PLN	772230008223	10772230008220	1000	26.5
2050001	5.25 x 3.25 x 18 White Bag @ 1000	772230070992	10772230070999	1000	23.11
2050012	5x3x18 A538 White Bag PLN	772230008728	10772230008725	1000	21.81
2050013	5.25x3.25x20 A165 White Bag PLN	772230013081	10772230013088	1000	12.79
PLAIN WINDOW BREAD BAGS - NATURAL					
1040027	4x2x24 Plain Brown Window Bag @1000	772230007615	10772230007612	1000	21.91
1040220	4 x 2 x 26 Natural Window Bread Bag	772230087358	10772230087355	1000	23.65
1050071	5.25 x 3.5 x 26 Natural Window Bread Bag	772230087365	10772230087362	1000	25.21
1060135	6x4x14 Natural Window Bread Bag @1000	772230087389	10772230087386	1000	20.78
1060137	6 x 3 x 18 Natural Window Bread Bag	772230088232	10772230088239	1000	24.41
1070059	7 x 4 x 18 Natural Window Bread Bag	772230087372	10772230087379	1000	29.62
1100003	10 x 3 x 12 Natural Window Bread Bag	772230080908	10772230080905	1000	24.87



Natural Bread Bag –Fresh Bread

Code	Description	UPC	SCC	Pkg	Lbs
FOIL LAMINATED BBQ BAGS					
2043001	Pint Foil BBQ Bags - Plain @ 1000	* 772230070985	10772230070982	1000	13.50
2043004	Pint Foil Stock Print BBQ Bag @1000	772230008926	10772230008923	1000	13.50
2043006	4x3x10 Pint Foil Chinese Bag	772230008919	10772230008916	1000	17.00
2053018	Quart Foil Bags Plain	* 772230007424	10772230007421	500	20.14
2053017	Quart Foil "BBQ" Bags Stock Print	772230011155	10772230011152	500	20.14
2053007	Quart Foil "Chinese" Bags Stock Print	772230011179	10772230011176	1000	19.11
2073003	1/2 Gallon Foil "BBQ" Bags Stock Print	772230008872	10772230008879	500	25.69
2073004	1/2 Gallon Foil Bags Plain	772230079650	10772230079657	500	25.69

FOIL LAMINATED HOT DOG BAGS					
2063003	6" x .75"x 6.75" Foil Bags Plain	772230005345	10772230005342	500	4.50
2073001	7" x 1.5" x 5" Foil Hot Dog Plain	772230007769	10772230007766	1000	8.62
2031002	3 x 2 x 9 FOIL HOT DOG BAGS PTD @ 1M/CS	772230072309	10772230072306	1000	7.28

FOIL LAMINTAED GARLIC BREAD BAGS					
2053004	5.25" x 2.25" x 21" Foil Garlic Bread Bags-PTD	772230005192	10772230005199	500	14.54



Plain Foil Bag



Foil BBQ Bag



Foil Chinese Bag



Foil Garlic Bag

SPECIALTY BAGS

Code	Description	UPC	SCC	Pkg	Lbs
HOSPITALITY BAGS					
2020001	2.75" x 10" Silverware Bags *	772230070879	10772230070876	1000	10.45
2030003	3" x 2" x 7" White Tumbler Bags Stock Print	772230008278	10772230008275	1000	8.17
2072001	7" x 4" x 10" Brown Wax Disposal	772230011223	10772230011220	500	17.54
2051009	5" x 3" x 12" VIP Doggie Bags Stock Print	772230012732	10772230012739	500	18.08
9040999	4"x2"x9" White Prescription Bags Stock Print	772230364206	10772230364203	1000	18.28
BROWN NOTION BAGS					
2030004	3" x 5" Brown Notion Bags *	772230010868	10772230010865	2000	2.16
2040014	4" x 6" Brown Notion Bags	772230001040	10772230001047	2000	1.87
2050008	5" x 7" Brown Notion Bags	772230070176	10772230070173	2000	2.21
2060021	6" x 9" Brown Notion Bags	772230000333	10772230000330	500	2.73
2070001	7" x 10" Brown Notion Bags	772230004348	10772230004345	500	3.08
2090001	9" x 12" Brown Notion Bags	772230000357	10772230000354	500	3.78
2110004	11" x 14" Brown Notion Bags	772230000364	10772230000361	500	4.47
2130001	13" x 16" Brown Notion Bags *	772230000371	10772230000378	500	5.16



Brown Wax Disposable



Foil VIP Doggie Bag



Tumbler Bag



Brown Notion Bag

Code	Description	UPC	SCC	Pkg	Lbs
KRAFT GROCERY BAGS					
4010001	1 LB Kraft Grocery Bags	772230078929	10772230078926	500	4.00
4020001	2 LB Kraft Grocery Bags	772230063741	10772230063748	500	5.00
4030002	3 LB Kraft Grocery Bags	772230009961	10772230009968	500	7.00
4040000	4 LB Kraft Grocery Bags	772230010073	10772230010070	500	7.00
4050000	5 LB Kraft Grocery Bags	772230008056	10772230008053	500	12.00
4060000	6 LB Kraft Grocery Bags	772230010066	10772230010063	500	12.00
4080000	8 LB Kraft Grocery Bags	772230008186	10772230008183	500	13.00
4100004	10 LB Kraft Grocery Bags	772230008780	10772230008787	500	19.00
4120000	12 LB Kraft Grocery Bags	772230008964	10772230008961	500	19.00
4140002	14 LB Kraft Grocery Bags	772230008018	10772230008015	500	25.00
4160000	16 LB Kraft Grocery Bags	772230008858	10772230008855	500	26.00
4200000	20 LB Kraft Grocery Bags	772230008858	10772230008855	500	26.00
4250001	25 LB Kraft Grocery Bags	772230070435	10772230070432	500	29.00

KRAFT GROCERY SACKS					
4600001	1/8th Kraft Sack #60	772230078349	10772230078346	500	36.00
4600000	1/6th Kraft Sack #60	772230078332	10772230078339	500	54.00

Code	Description	UPC	SCC	Pkg	Lbs
WHITE GROCERY BAGS					
4030004	3 LB White Grocery Bags	772230009954	10772230009951	500	7.00
4040004	4 LB White Grocery Bags	772230075607	10772230075604	500	7.00
4050005	5 LB White Grocery Bags	772230010202	10772230010209	500	12.00
4060026	6 LB White Grocery Bags	772230008773	10772230008770	500	12.00
4080006	8 LB White Grocery Bags	772230008537	10772230008534	500	13.00
4100006	10 LB White Grocery Bags	772230009497	10772230009494	500	19.00
4120003	12 LB White Grocery Bags	772230064281	10772230064288	500	21.00
4140004	14 LB White Grocery Bags	772230008957	10772230008954	500	25.00
4160003	16 LB White Grocery Bags	* 772230079285	10772230079282	500	26.00
4200007	20 LB White Grocery Bags	772230010219	10772230010216	500	26.00
4250002	25 LB White Grocery Bags	* 772230075621	10772230075628	500	29.00



FOODSERVICE BAGS

BAGS

Code	Description	UPC	SCC	Pkg	Lbs
HOT DOG BAGS & SLEEVES					
3031012	3.5"x1.5"x7.5" GP Hot Dog Sleeves Plain	772230068050	10772230068057	1000	5.49
3031003	3.5x1.5x7.5 GP Hot Dog Sleeves Stock PTD	772230082605	10772230082602	1000	11.07
PIZZA SLICE BAGS					
2110002	11"x4"x16" Kraft Pizza Slice Bags Stock Print	772230008407	10772230008404	500	36.64
2110003	11" x 4" x 16"White Pizza Slice Bag Stock Design	772230001194	10772230001191	500	36.64
SANDWICH BAGS					
2061008	6" x .75" x 6.75" GP White Sandwich Bags Plain	772230003624	10772230003621	1000	6.05
2061009	6" x 2" x 9" Jumbo GP White Bags Plain	772230000111	10772230000118	1000	9.87
2062006	6" x .75" x 6.75" Waxed Sandwich Bags Plain	772230002511	10772230002518	1000	6.05
SUBMARINE BAGS					
2040017	White Sub Bags Plain	772230004416	10772230004413	1000	16.87
2040029	4x2.5x16 A436 Hero Sub Bag @1000	772230013432	10772230013439	1000	16.87
2040066	4.5x2x16 A435 Hero Sub Bag @1000	772230002535	10772230002532	1000	15.99
SIDE-VIEW BAGS					
2049001	4.5x2.75x14 Side-View Sandwich Bag@ 1000	772230093175	10772230093172	1000	16.40
2059001	5.75x2.75x12 Side-View Sandwich Bag@1000	772230093182	10772230093189	1000	16.40



Sid-View Bag



Submarine Bag



GP Sandwich Bag

Code Description UPC SCC Pkg Lbs

DRY WAX SHEETS

5120011	12" x 12" 18/21 White Dry Wax Sheets	772230071593	10772230071590	1000	7.00
5122035	12" x 14" 18/21 White Dry Wax Sheets	772230078974	10772230078971	1000	8.15
5122048	12" x 15" 18/21 White Dry Wax Sheets	772230084296	10772230084293	1000	8.75
5122025	12" x 18" 18/21 White Dry Wax Sheets	772230000197	10772230000194	1000	11.03
5142004	14" x 14" 18/21 White Dry Wax Sheets	772230071715	10772230071712	1000	10.00
5152005	15" x 18" 18/21 White Dry Wax Sheets	772230000203	10772230000200	1000	13.78

5120004	12x12 35/43 Dry Wax Sheets @ 50 LB BULK	772230071548	10772230071545	50lbs	50.00
5122016	12x15 35/43 Dry Wax Sheets @ 5 x 10LB	772230009336	10772230009333	5 x 10lb	50.00
5142001	14x14 35/43 Dry Wax Sheets @ 50 LB	772230071685	10772230071682	50lbs	50.00
5142006	14x18 35/43 Dry Wax Sheets @ 50 LB	772230009367	10772230009364	50lbs	50.00
5152001	15x15 35/43 Dry Wax Sheets @ 50 LB	772230071777	10772230071774	50lbs	50.00
5182001	18x18 35/43 Dry Wax Sheets @ 50 LB/Case	772230071937	10772230071934	50lbs	50.00

SCALE PAPER

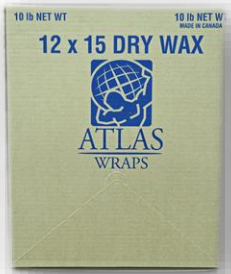
5082001	8" x 11" Dry Wax Scale Paper	772230005314	10772230005311	4 x 2000	34.22
5092004	9" x 12" Dry Wax Scale Paper	772230002474	10772230002471	4 x 2000	42.00

PATTY PAPER

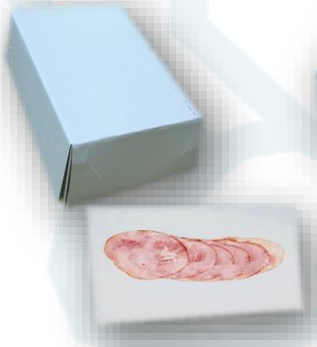
5052005	5.25" x 5.25" Patty Paper	772230005338	10772230005335	12 x 1000	19.14
---------	---------------------------	--------------	----------------	-----------	-------

WAXED TISSUE

5092003	5.5" x 9" 11/16 Waxies Tissue	772230005857	10772230005854	12 x 1000	22.00
---------	-------------------------------	--------------	----------------	-----------	-------



Dry Wax Paper



Scale Paper



Patty Paper



Waxed Tissue

PAPER SHEETS - LINERS

SHEETS

Code	Description	UPC	SCC	Pkg	Lbs
WET WAX PAPERS					
5092006	9x12 35/47 Wet Wax Sheets @ 5 x 10LB	772230067121	10772230067128	5 x 10lb	50.00
5120002	12x12 35/47 Wet Wax Sheets @ 50 LB BULK	772230071524	10772230071521	50lbs	50.00
5122017	12x15 35/47 Wet Wax Sheets @ 5 x 10LB	772230009350	10772230009357	5 x 10lb	50.00
5122077	12x18 35/47 White Waxed Sheets 2 Sides	772230095148	10772230095145	50lbs	48.00
CHECKERED BASKET LINERS					
5121001	12" x 12" Black Check GP Liners	772230005277	10772230005274	2000	16.67
5121002	12" x 12" Green Check GP Liners	772230005482	10772230005489	2000	16.67
5121003	12" x 12" Red Check GP Liners	772230005475	10772230005472	2000	16.67
GREASEPROOF PIZZA LINERS					
5081002	8" x 8" Greaseproof Pizza Liners	772230006779	10772230006776	1000	3.70
5091001	9" x 9" Greaseproof Pizza Liners	772230007080	10772230007087	2 x 1000	9.38
5101001	10" x 10" Greaseproof Pizza Liners	772230003624	10772230003621	1000	5.79
5121005	12" x 12" Greaseproof Pizza Liners	772230007219	10772230007216	2 x 1000	16.67



Wet Wax Paper

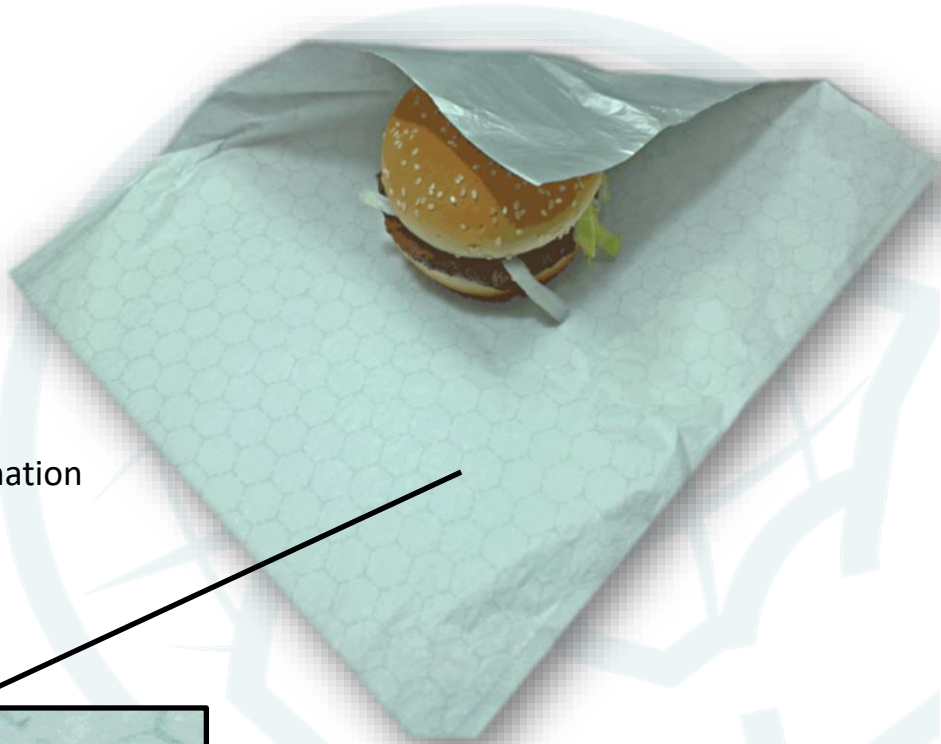


Checkered Basket Liners

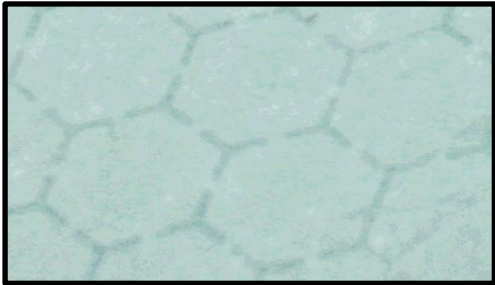


Greaseproof Pizza Liners

Code	Description	UPC	SCC	Pkg	Lbs
FOIL CUSHION WRAPS					
5123002	12" x 12" Foil Cushion Wraps - Plain	772230002634	10772230002631	1000	10.00
5123003	12" x 14" Foil Cushion Wraps - Plain	772230002641	10772230002648	1000	11.67
5143007	14" x 14" Foil Cushion Wraps - Plain	772230002672	10772230002679	1000	13.61
5143006	14" x 16" Foil Cushion Wraps - Plain	772230074761	10772230074768	2 x 500	15.56



Pattern Lamination
retains heat

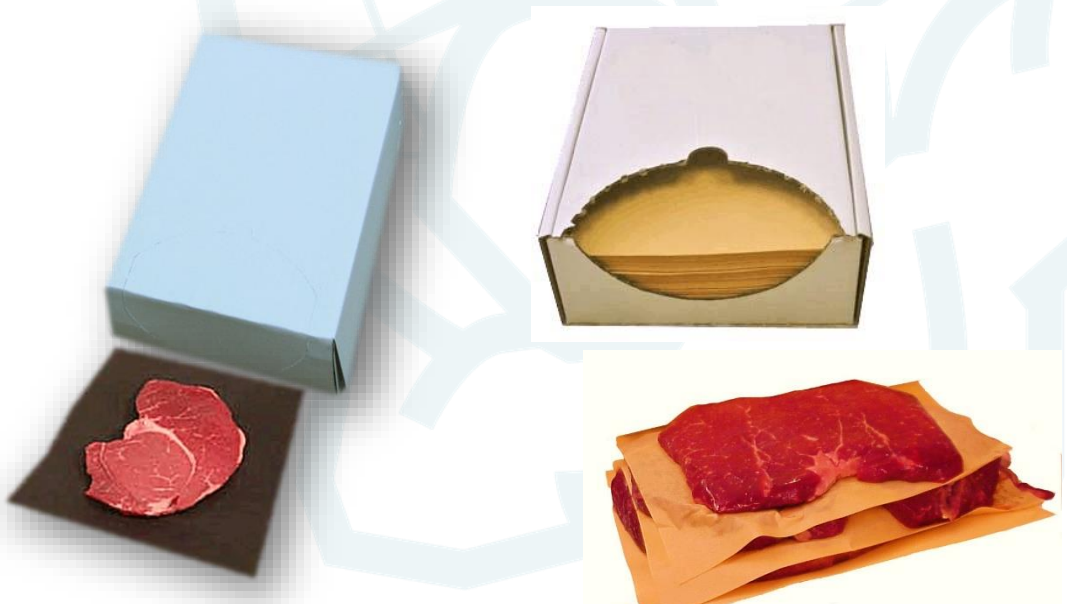


Foil Cushion Wrap

STEAK PAPER SHEETS

Code	Description	UPC	SCC	Pkg	Lbs
STEAK PAPERS - PEACH					
5065003	6" x 30" Steak Paper - Peach	772230064748	10772230064745	1000	14.58
5085002	8" x 11" Steak Paper - Peach	772230005185	10772230005182	4 x 1000	28.52
5095005	9" x 12" Steak Paper - Peach	772230071289	10772230071286	4 x 1000	35.00
5105002	10" x 14" Steak Paper - Peach	772230071425	10772230071422	1000	11.34
5105001	10" x 30" Steak Paper - Peach	772230071418	10772230071415	1000	24.31
5125006	12" x 18" Steak Paper - Peach	772230005437	10772230005434	2000	17.50

STEAK PAPERS - BLACK					
5065002	6" x 30" Steak Paper - Black	772230071258	10772230071255	1000	14.58
5085005	8" x 11" Steak Paper - Black	772230003266	10772230003263	4 x 1000	28.52
5095007	9" x 12" Steak Paper - Black	772230071319	10772230071316	4 x 1000	35.00
5085007	8" x 30" Steak Paper - Black	772230078042	10772230078049	1000	21.67
5105010	10" x 29" Steak Paper - Black	772230010240	10772230010247	1000	16.87
5105012	10" x 30" Steak Paper - Black	772230088737	10772230088734	1000	16.87



Code	Description	UPC	SCC	Pkg	Lbs
SILICONE PAN LINERS					
5168015	16.375" x 24.375" Bakers Choice Silicone Parchment	772230006496	10772230006493	1000	24.95
5148002	14.5x20.5 Small Silicone Pan Liner	772230010691	10772230010698	1000	17.20
ECOBAKE PAN LINERS					
5168016	16.375" x 12.1875" Ecobake	772230064946	10772230064943	2000	24.95
5168018	16.375" x 24.375" Ecobake	772230005086	10772230005083	1000	24.95
QUILON PAN LINERS					
5168005	16.375" x 24.375" Quilon	772230071869	10772230071866	1000	23.10
5168007	16.375" x 12.1875" Quilon	772230071876	10772230071873	2000	11.55
5188004	18.5" x 26.5" Quilon	772230064939	10772230064936	1000	28.37

Liner	# Bakes	Baking Temp
Quilon	1	350 °F
Eco Bake	3-4	375 °F
Sil. Parchment	5-6	425 °F



Baker's Choice Parchment

MEAT & BUTCHER ROLLS

ROLLS

Code	Description	UPC	SCC	Pkg	Lbs
RED FREEZER PAPER					
6156003	15 x 900 Red Freezer Rolls	772230083848	10772230083845	1	17.72
6186011	18 x 900 Red Freezer Rolls	772230082599	10772230082596	1	21.26
6246001	24"x 900' Red Freezer Rolls	772230080519	10772230080516	1	28.35

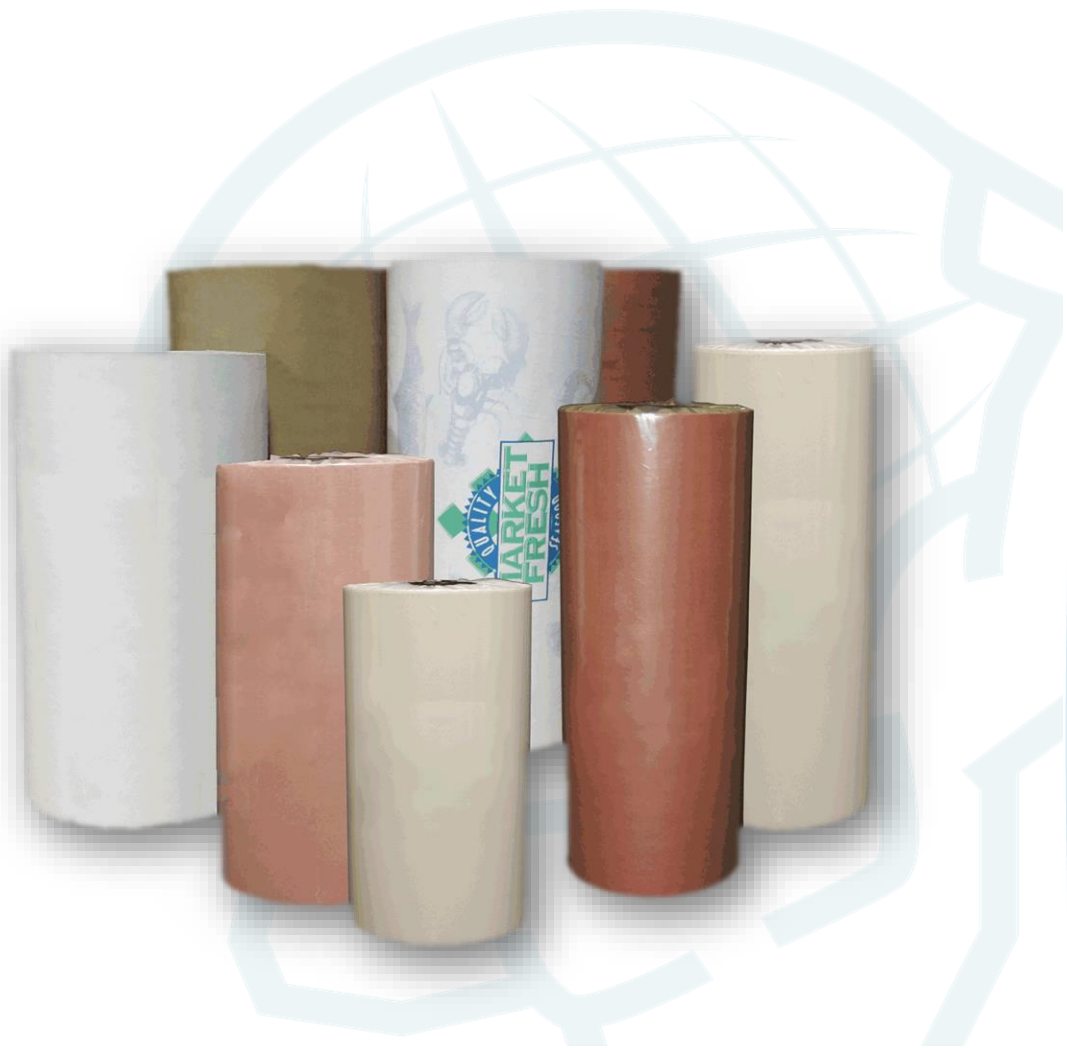
Code	Description	UPC	SCC	Pkg	Lbs
BROWN FREEZER PAPER					
6156004	15" X 900' Brown Freezer Roll @ 1 Roll	772230064953	107722300649530	1	17.72
6156012	15" X 1100' Brown Freezer Rolls	772230088218	107722300882185	1	18.00
6156014	15 X 240M Brown Poly Freezer Rolls	772230092550	107722300925507	1	15.50
6186008	18" X 1100' Brown Freezer Rolls	772230072200	107722300722007	1	21.50
6186013	18 X 900' Brown Freezer Roll	772230064885	107722300648852	1	19.80
6186069	18 X 240M Brown Poly Freezer Rolls	772230092567	107722300925674	1	18.71
6246014	24" X 1100' Brown Freezer Rolls	772230088225	107722300882252	1	26.25
6246017	24 X 240M Brown Poly Freezer Rolls	772230092574	107722300925741	1	24.95

Code	Description	UPC	SCC	Pkg	Lbs
WHITE FREEZER PAPER					
6156005	15x1100 White Freezer Roll	772230011643	107722300116430	1	21.66
6186030	18 x 1100 White Freezer Roll	772230011957	107722300119574	1	22.50
6246002	24x1100 White Freezer Roll	772230011803	107722300118030	1	28.35
WHITE FREEZER PAPER - STOCK PRINT					
6186072	18x1000 Wh.Freezer BA Meat & Poultry Rls	772230094912	107722300949129	1	23.63
6186073	18x1000 Wh.Freezer BA Seafood Rls	772230094929	107722300949296	1	23.63
6246018	24x1000 Wh.Freezer BA Meat & Poultry Rls	772230094950	107722300949507	1	31.50

Code	Description	UPC	SCC	Pkg	Lbs
WHITE BUTCHER PAPER					
6157005	15" x 1000' White Butcher Rolls	772230011650	10772230011657	1	14.58
6187004	18" x 1000' White Butcher Rolls	772230072279	10772230072276	1	17.50
6247004	24" x 1000' White Butcher Rolls	772230078844	10772230078841	1	23.33



Code	Description	UPC	SCC	Pkg	Lbs
PLAIN WAXED ROLLS					
6152002	15" x 1000' 35/40 White Wet Wax	772230065424	10772230065421	1	18.75
6182001	18" x 1000' 35/40 White Wet Wax	* 772230072194	10772230072191	1	17.50



MATERIAL DESCRIPTIONS



Name	Description
Dry Wax	The wax is impregnated into the paper and leaves very little wax on the surface. Dry waxing is best used for hot products like hot dogs, hamburgers, tray lining or fast food basket liners, etc.
Wet Wax	This type of waxing is when the majority of the wax remains on the top of the sheet which makes the surface of the sheet wet or very waxy. Wet waxed sheets and rolls can be used anywhere where heat is not an issue like cold cuts, meats, pastries, sandwiches and frozen foods. The weights can vary from 3 lbs to 20 lbs of wax, depending on the application requirement.
Grease Proof	A treated paper that offers superior resistance to oil and grease.
Gusset	The side panel of a bag. Second measurement taken when sizing a bag
Laminate	Paper, Foil or Film materials are bonded together to form a stronger material with improved barrier characteristics.
Laminating	The operation of combining two or more layers of material with an adhesive (paper/aluminium; paper/paper; paper/aluminium/poly.) to provided various barrier properties.
Natural Kraft	Kraft paper is a paper produced from chemical pulp produced in the kraft process. Kraft pulp is darker than other wood pulps, but it can be bleached to make very white pulp. Fully bleached kraft pulp is used to make high quality paper where strength, whiteness and resistance to yellowing are important.
Notion Bags	Any bag with an “edge” bottom that is heat sealed or glued.
Release	A Release liner is a paper which is coated on one or two sides with a release agent, which provides a release effect against any type of a sticky foods. Release is separation of the liner from a sticky material. a liner is the carrier for the release agent.

Atlas Paper Bag Co. Ltd

- ❖ Is committed to conduct business and its operations in a manner that will reduce the impact on the environment by promoting sustainable development.
- ❖ Communicate, train and make aware all employees and management about the reduction of waste and its environmental effects.
- ❖ Implement working methods and procedures to preserve natural resources by better using raw materials and energy.
- ❖ Direct Atlas Paper Bags activities in a continuous improvement regarding the environment while respecting our company's interests, employees, customers, suppliers and community.
- ❖ Monitor environmental performance and waste management on an ongoing weekly basis and collectively with the staff, bring corrective actions to any issues that may hinder our environmental policy.



Product Line	Recyclable	Compostable
Bags - Paper	X	X
Bags - Greaseproof	X	X
Bags - Foil	X	
Bags - Waxed		X
Pan Liners		X
GP Pizza Liner	X	X
Chocolate Basket	X	X
Foil - Thermo	X	
Interfold - HDPE	X	
Kraft - Butcher	X	X
Peach Paper	X	X
Freezer Rolls	X	
Waxed Papers		X

By using less paper, and returning recycled content back into the pipeline, and making other improvements, you can save wood, water and energy and cut pollution and solid waste

- Up to 4 colours
- Both; Random or Spot Bag Print
- State of the art Flexo Presses
- Latest Manufacturing Technology
- Sheets, Rolls or Bags
- In House Graphic Department
- In House Plates Department



Bag Measurements

General:

All bag dimensions always have **WIDTH** (the side that opens) as the first number.

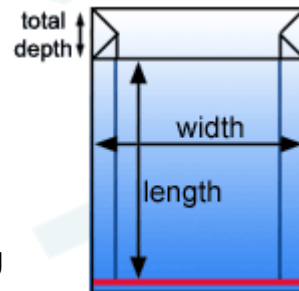
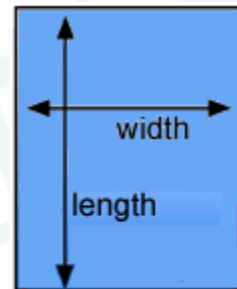
FLAT BAGS : side seal & bottom seal

DIMENSIONS: *width x length*

The **WIDTH** is measured across the opening of the bag.
The **LENGTH** is measured from the opening of the bag to its base.

SIDE GUSSET BAGS : A gusset is a fold on the bag that gives added depth by creating expandable sides.

The **WIDTH** is measured across the opening of the bag.
The **DEPTH** is measured across the gusset (side) of the bag when the gusset is **EXTENDED**.
The **LENGTH** is measured from the opening of the bag to its base.



CONTACT INFORMATION

Address: 90 Dynamic Drive
Toronto, Ontario
M1V 2V1
Canada

Phone: 416.293.2125
866-358-4951

Fax: 416.293.2369

Email info@atlaspaperbag.com

Web Site www.atlaspaperbag.com

Revised January 2022